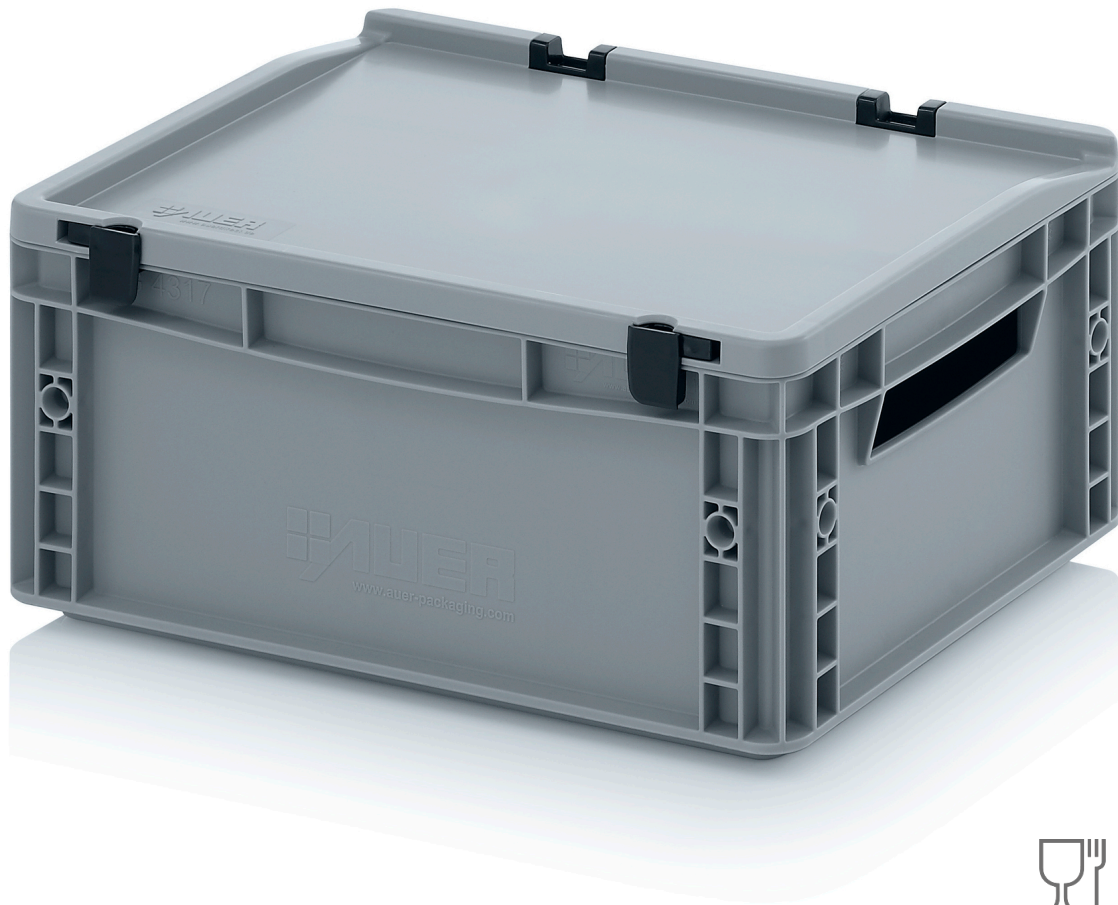


EURO CONTAINERS WITH HINGE LID ED 43/17



Securely closed

AUER Packaging's hinge-lid Euro container can be closed in next to no time thanks to its easy-to-use hinge system. This gives your goods the best possible protection from damage in transit and contamination.

- Also stackable with lid
- Matched to Euro dimensions
- Sturdy hinges
- With open or closed hand grips

DETAILS

Outer dimensions L x W x H	40 x 30 x 18.5 cm	Made up of	1x EG 43/17 1x SD 43
Inner dimensions L x W x H	37 x 27 x 14.7 cm	Volume	15 liter
Usable interior height in stack	14.7 cm	Weight	1.52 kg
Side design	Closed	Note	New Design: handles with radius; base design smooth
Base design	Smooth, closed	Material	PP
Handles	Open	Colour	Container, Lid: silver grey similar RAL 7001 Hinges and Latches: traffic black similar RAL 9017